

INSTALLATION INSTRUCTIONS

Tools Required

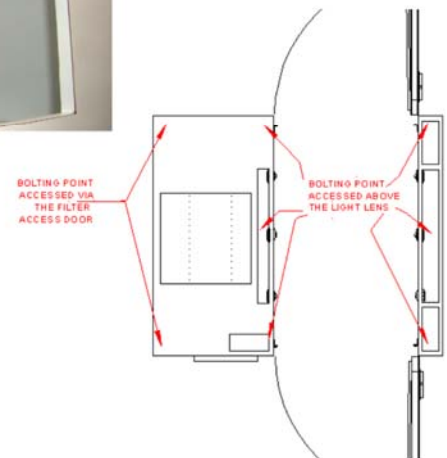
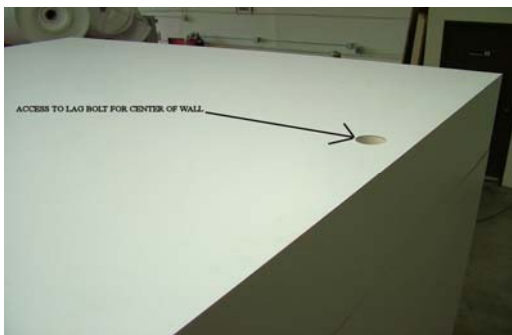
Chalk-line, framing square, 2' & 4' levels, tape measure, ratchet & extension, 3/4" socket, drill, masonry bit, pipe-mounted clamp capable of opening to the exterior width of the Air Shower, wood block sized to fit interior width of unit, material lift (forklift or Genie-Lift), rubber mallet or block and hammer, white RTV sealant, cleaning supplies, common hand tools.

Step 1: Sweep the area clean, then mark lines creating a box the exact size of the exterior dimensions of the air shower. Establish the location of the sill plates by measuring in from the side and ends of the corresponding wall pocket. Draw a line showing the location for the sill plate. Anchor the sill plate to the floor using screws or shields, whichever is appropriate for the application.

Step 2: Set the wall and mechanical enclosure section in place on top of the sill plates you have just installed. There is a pocket under the wall and mechanical section. The sill plates keep the air shower from shifting.

Step 3: Secure the wall and mechanical enclosure in place by using a pipe clamp. If space allows place a block the size of the door opening between the wall and mechanical enclosure and place the pipe clamp from outside wall to outside wall to secure the walls in place. Next place the second wall and mechanical in place. Be sure when you fasten the second set of sill plates that you allow for the Tee molding. **Check the wall and mechanical enclosure to make sure they are level and plumb. If necessary place shims under the wall or mechanical enclosure. This step is very important. If the air shower is not level and plumb it will create problems with the door alignment.**

Step 4: Remove the mechanical enclosure panels on each mechanical enclosure. Using a mechanical lifting device (or a forklift if space permits) raise the first roof section above the walls, place sealant along the tops of the wall and mechanical section and lower the roof in place. Align one corner and thread the 1/2" lag bolt through the holes in the roof section (for the wall) into the threaded pod in the wall. You access the bolting points by removing the light lens cover and reaching in to the bolt hole located above the wall. There are three bolts locations in the wall. One on each end and one in the center. There are three bolt locations for the mechanical section accessed in the light box are as well. The bolt locations for the back area of the mechanical section are located in the HEPA filter compartment at the top of the mechanical enclosure. There are 2 bolts. One in each corner. Here the bolts thread into a receiving pod in the roof. Align one corner at a time and tighten that bolt until all four corners and the center of the wall are in alignment with the roof.



INSTALLATION INSTRUCTIONS

Step 5: Once the roof section is bolted down look inside each light box and you will find 24VDC cables for the lights and the low voltage switches and locks. There is an chase from the roof down to the compartment where the blower is located. Push both cables down the chase and connect them to the corresponding outlet (the low voltage cable has connection points under the power panel).

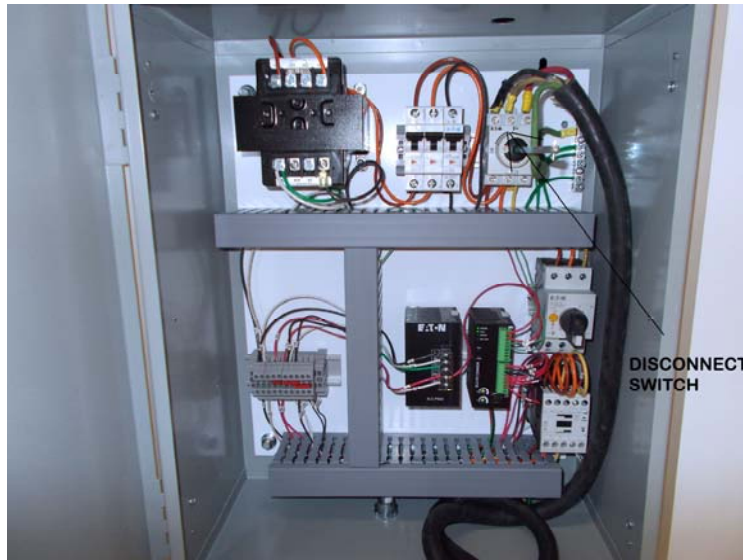


STEP 6: Hang both doors on air shower. Once the doors are hung reconnect the door closer arms. Remove the screw holding the closer arm and position it at 45 degrees from the face of the door. Screw in the fastener for the arm and connect the arm on the roof to the arm on the closer.



INSTALLATION INSTRUCTIONS

Step 7. Run 3 phase power to the power panel in the air shower. Connect the power to the disconnect switch inside the panel.



STEP 8: Turn on the disconnect switch and bump the motor starter for the blower to check rotation. If rotation is backward reverse any two wires on the bottom of the motor starter.

STEP 9: Pull the emergency stop/start switch to the out position. Open the entry door and check the sequence of operation. When the entry door opens and then closes the blowers should turn on and run for approximately 20 seconds (see manual if you wish to make a change in the timer value). Check the door locks to make sure that when one door is open the opposite door is locked. When a door is locked the indicator light on the lock should be green. If it is red loosen the bolt holding the lock armature on the door, shut the door and open the opposite door to engage the lock. When the armature pulls into the lock tighten the bolt that holds the armature.

