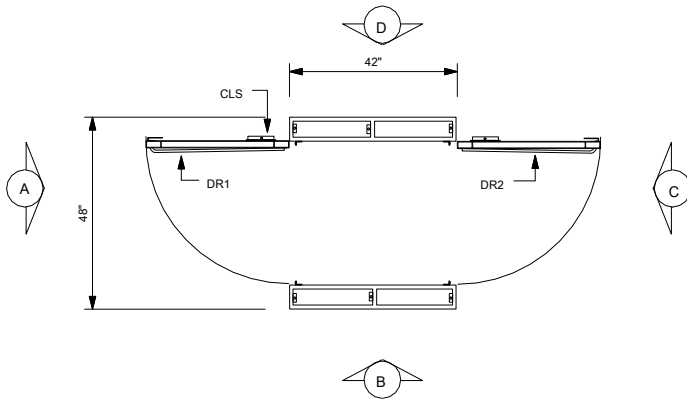
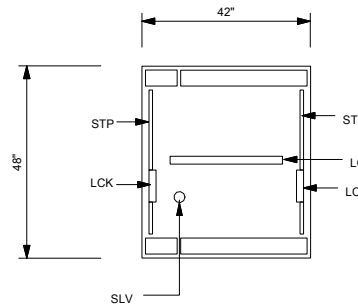


PLAN VIEW



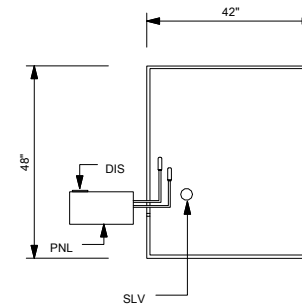
ELEVATION "A"

CEILING VIEW

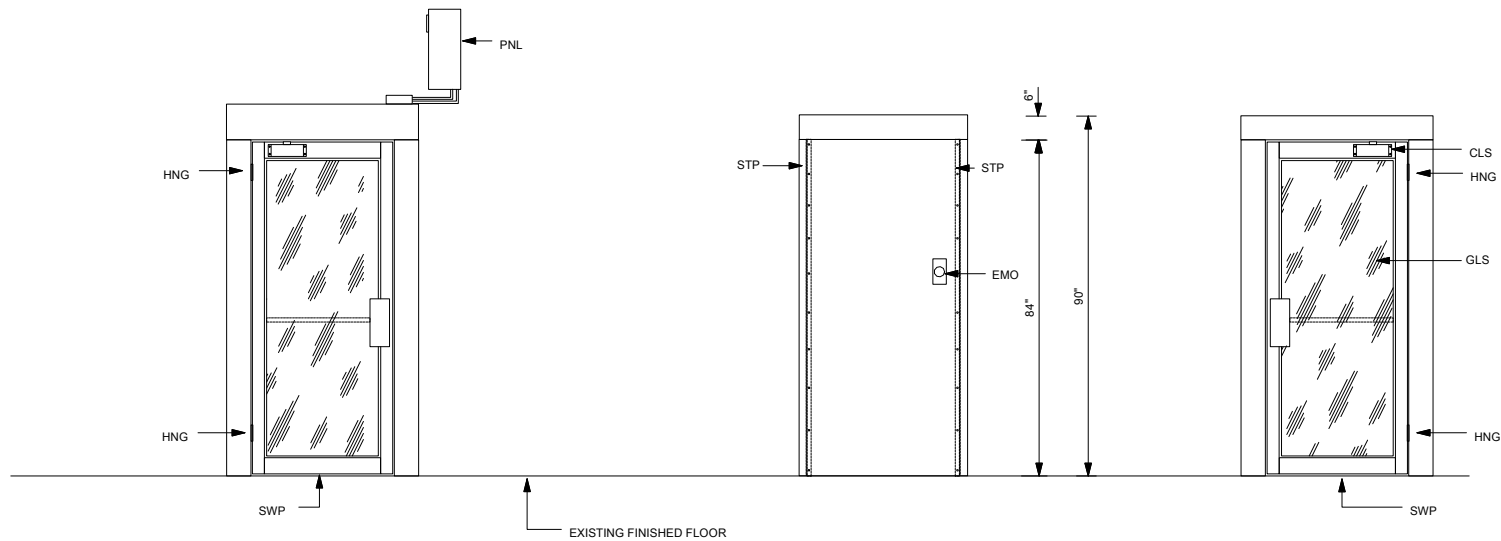


ELEVATION "B"

ROOF VIEW



ELEVATION "C"



Notes:

1. The control panel is connected to the air shower with 8' of seal tight flex.
2. The air lock is shipped assembled except for doors.
3. The air lock is supplied with a sleeved penetration through the roofsection for installation of a sprinkler head. Sprinkler is by others.
4. The air lock does not have a floor. It uses the existing floor.

LEGEND

CLS=COMMERCIAL DUTY DOOR CLOSER  
 EMO=EMERGENCY STOP SWITCH  
 DR1=CLEAR ANODIZED ALUMINUM FRAME DOOR (ENTRY END)  
 DR2=CLEAR ANODIZED ALUMINUM FRAME DOOR (EXIT END)  
 GLS=0.25" THICK CLEAR TEMPERED GLASS  
 HNG=4.5" NICKEL PLATED BUTT HINGE  
 LGT=LED LIGHT FIXTURE  
 PNL=NEMA 1 ENCLOSURE CONTROL PANEL  
 SLV=SLEEVED PENETRATION THROUGH ROOF FOR INSTALLTION OF SPRINKER  
 STP=PEMKO #285CPK DOOR SEALS  
 SWP=PEMKO #307AV DOOR SWEEP



PO Box 427  
 Rancho Cucamonga, CA 91729-0427  
 Voice: (800) 913-0054  
 Fax: (909) 483-1801

Drw# AL4842ST	Title: 48" x 42" AIR LOCK
Sheet:	Project:
	Date: