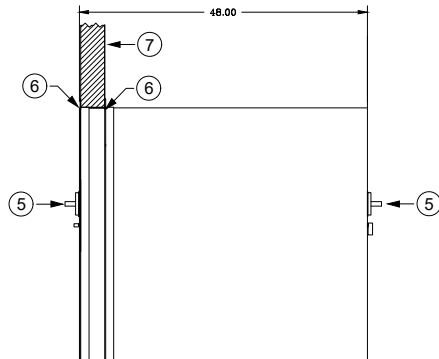
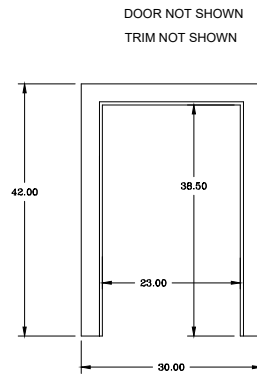


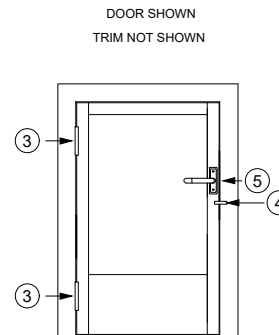
ELEVATION "B"



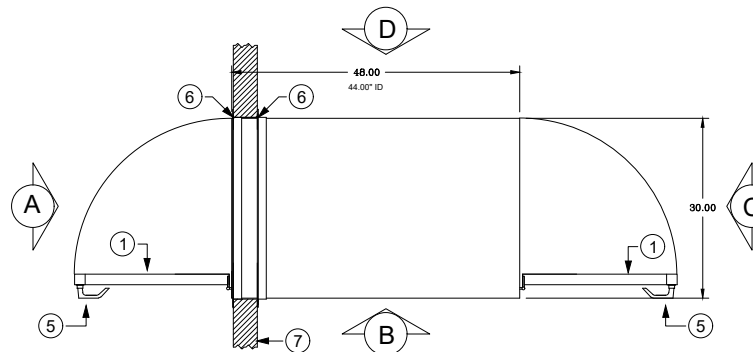
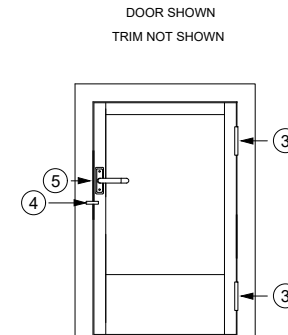
ELEVATION "A"



ELEVATION "A"



ELEVATION "C"



LEGEND

- 1 = CLEAR ANODIZED ALUMINUM FRAME DOOR WITH $\frac{1}{4}$ " CLEAR TEMPERED GLASS
- 2 = PEMKO CPK285 DOOR SEAL
- 3 = 4.5" BRUSHED NICKLE PLATED BUTT HINGE
- 4 = POLISHED ALUMINUM INTERLOCK LEVER
- 5 = LEVER HANDLE PASSAGE LOCKSET WITH PAINTED GRAY FINISH
- 6 = CLEAR ANODIZED ALUMINUM ANGLE
- 7 = EXISTING WALL

NOTES:

- 1. PASS THRU IS CONSTRUCTED OF A WOOD CORE WITH A WHITE PLASTIC LAMINATE FINISH
- 2. TRIM ANGLE IS SHIPPED LOOSE TO ALLOW FLEXIBILITY OF INSTALLATION
- 3. THE PASS THRU HAS MECHANICAL INTERLOCKS
- 4. WALL CUT OUT IS 5/8" LARGER THAN THE OUTSIDE DIMENSIONS OF THE PASS THRU
- 5. THE I.D. DIMENSION SHOWN ON THE DRAWING REFLECTS THE CLEAR DOOR OPENING
- 6. THE PASS THRU DOES NOT HAVE A FLOOR, IT USES THE EXISTING FLOOR

☐ APPROVED
☐ APPROVED AS NOTED
☐ REVISE AND RESUBMIT

BY: _____

DATE: _____



PO Box 427
 Rancho Cucamonga, CA 91729-0427
 Voice: (800) 913-0054
 Fax: (909) 483-1801

DATE:	JOB#:	SERIAL#:	TITLE: CP304842WP
SHEET: 1 of 1	SCALE: 1/2" = 1'-0"	PROJECT:	