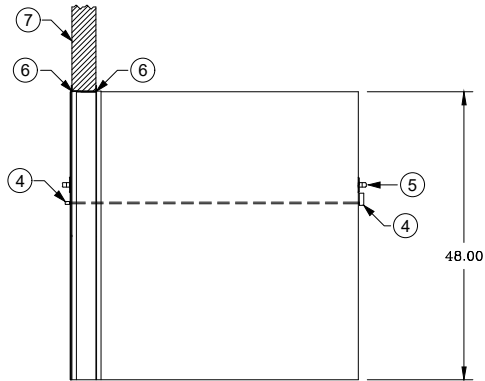
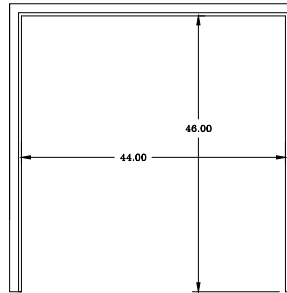


ELEVATION "B"



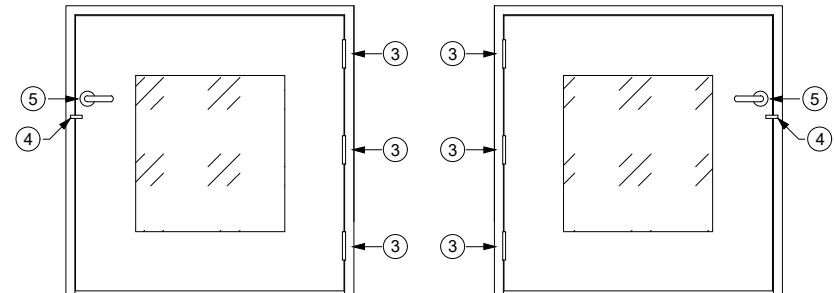
ELEVATION "A"

DOOR NOT SHOWN  
TRIM NOT SHOWN



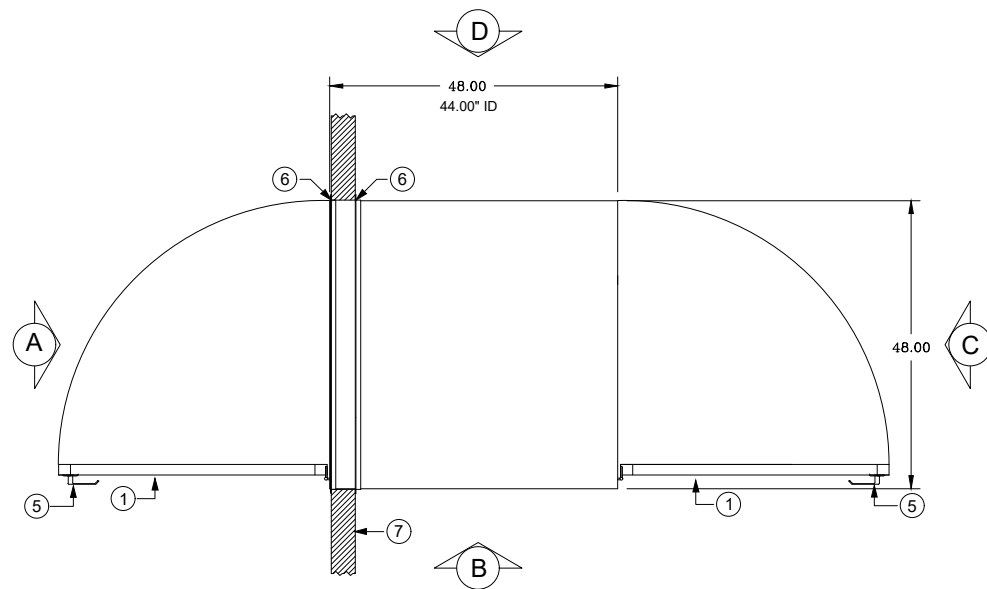
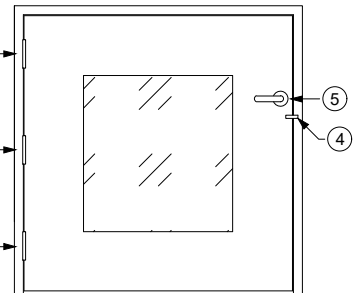
ELEVATION "A"

DOOR SHOWN  
TRIM NOT SHOWN



ELEVATION "C"

DOOR SHOWN  
TRIM NOT SHOWN



## LEGEND

- 1 = 304 STAINLESS STEEL DOOR WITH 0.25" TEMPERED GLASS VISION PANEL  
2 = PEMKO S88BL GASKET SEAL  
3 = 304 STAINLESS STEEL BUTT HINGE  
4 = POLISHED ALUMINUM INTERLOCK LEVER  
5 = 304 STAINLESS STEEL DOOR LATCH  
6 = 1.5" x 1.5" 316 STAINLESS STEEL ANGLE WITH A #4 BRUSHED FINISH  
7 = EXISTING WALL

## NOTES:

1. PASS THRU IS CONSTRUCTED OF A DOUBLE WALL 304 STAINLESS STEEL WITH A #4 BRUSHED FINISH  
2. TRIM ANGLE IS SHIPPED LOOSE TO ALLOW FLEXIBILITY OF INSTALLATION  
3. THE PASS THRU HAS MECHANICAL INTERLOCKS  
4. WALL CUT OUT IS 5/8" LARGER THAN THE OUTSIDE DIMENSIONS OF THE PASS THRU  
5. THE I.D. DIMENSION SHOWN ON THE DRAWING REFLECTS THE CLEAR DOOR OPENING  
6. ALL SEAMS HAVE A CONTINUOUS WELD AND ARE GROUND SMOOTH TO MATCH THE #4 FINISH  
7. THE PASS THRU DOES NOT HAVE A FLOOR, IT USES THE EXISTING FLOOR.

☐ APPROVED  
☐ APPROVED AS NOTED  
☐ REVISE AND RESUBMIT

BY: \_\_\_\_\_

DATE: \_\_\_\_\_



PO Box 427  
Rancho Cucamonga, CA 91729-0427  
Voice: (800) 913-0054  
Fax: (909) 483-1801

|               |                     |          |                     |
|---------------|---------------------|----------|---------------------|
| DATE:         | JOB#:               | SERIAL#: | TITLE: CP484848DWSS |
| SHEET: 1 of 1 | SCALE: 3/8" = 1'-0" | PROJECT: |                     |