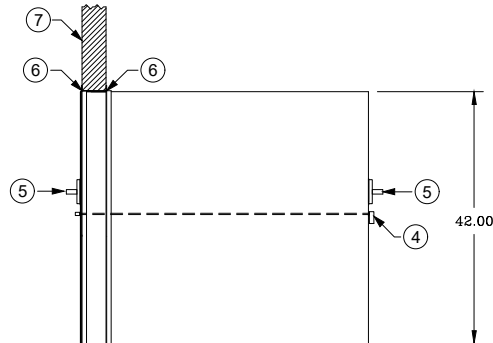
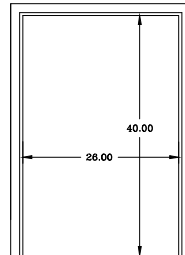


ELEVATION "B"



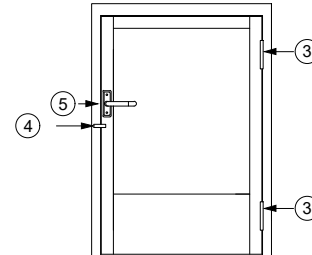
ELEVATION "A"

DOOR NOT SHOWN
TRIM NOT SHOWN



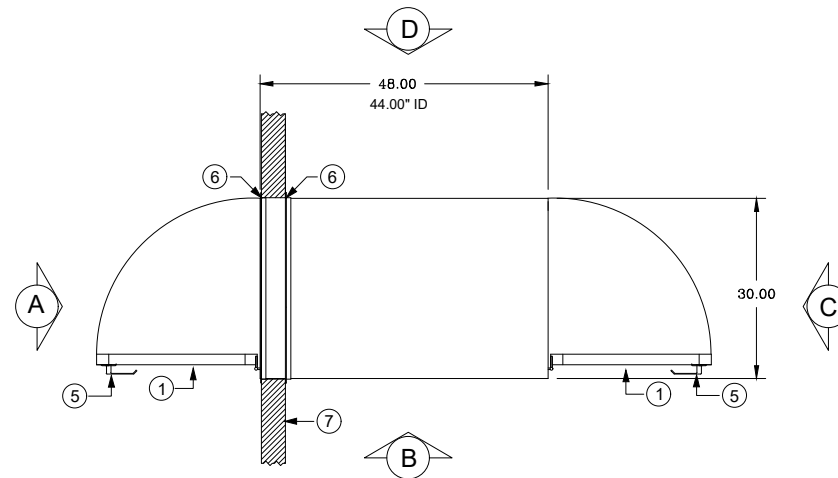
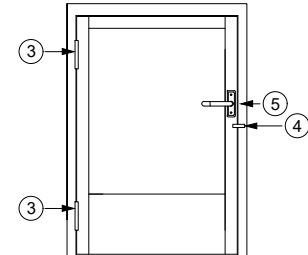
ELEVATION "A"

DOOR SHOWN
TRIM NOT SHOWN



ELEVATION "C"

DOOR SHOWN
TRIM NOT SHOWN



LEGEND

- 1 = CLEAR ANODIZED ALUMINUM STOREFRONT DOOR WITH 0.25\"/>

NOTES:

1. PASS THROUGH IS CONSTRUCTED OF A DOUBLE WALL COLD ROLL STEEL WITH A WHITE POWDER COATED FINISH
2. TRIM ANGLE IS SHIPPED LOOSE TO ALLOW FLEXIBILITY OF INSTALLATION
3. THE PASS THRU HAS MECHANICAL INTERLOCKS
4. WALL CUT OUT IS 5/8\"/>

☐ APPROVED
☐ APPROVED AS NOTED
☐ REVISE AND RESUBMIT

BY: _____

DATE: _____



PO Box 427
Rancho Cucamonga, CA 91729-0427
Voice: (800) 913-0054
Fax: (909) 483-1801

DATE:	JOB#:	SERIAL#:	TITLE: CP304842DWPS
SHEET: 1 of 1	SCALE: 3/8" = 1'-0"	PROJECT:	